

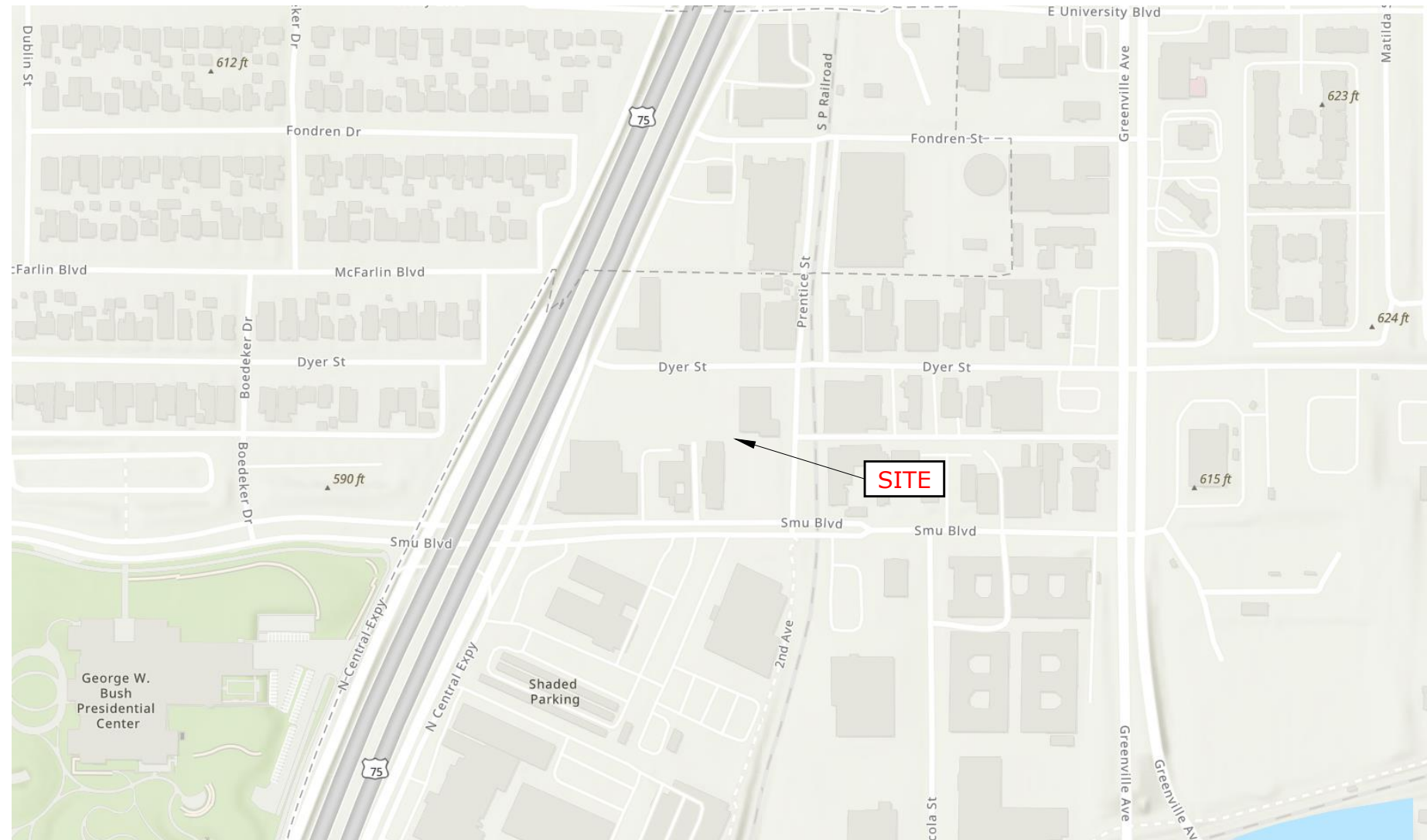
# Southern Methodist University

## Drone Enclosure

5538 Dyer Street  
Dallas, TX 75206

### **DRAWING INDEX**

- 1) COVER
- 2) ISOMETRIC
- 3) SITE PLAN
- 4) PLAN & ELEVATION
- 5) POLE LAYOUT
- 6) DOOR DETAIL
- 7) NET FAB.
- 8) NOTES
- 9) POLE FABRICATION

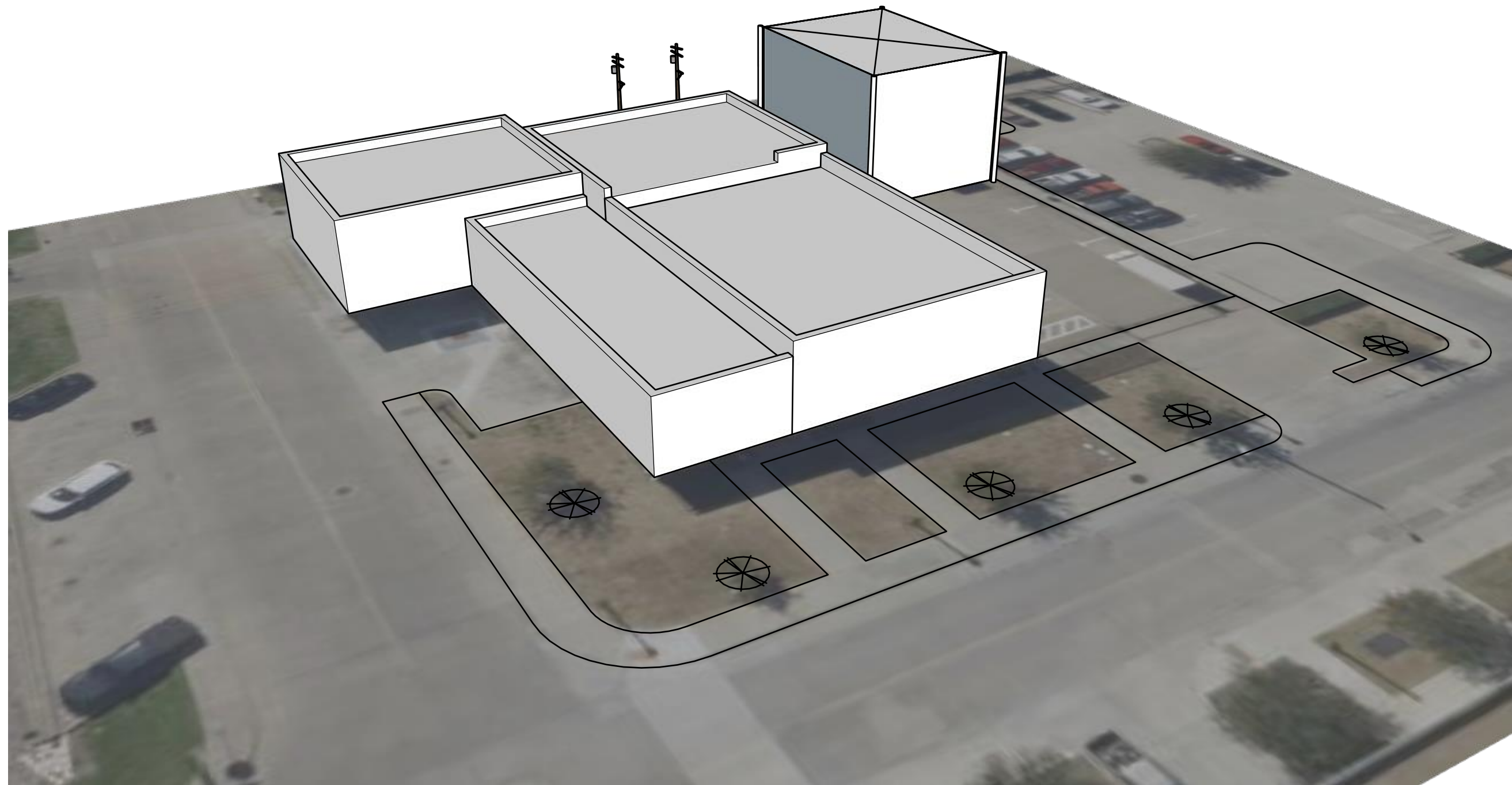


SMU Drone Enclosure

**Containment Systems**

**For Approval**  
**Job No. 26508-09**

4/24/26



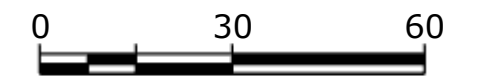
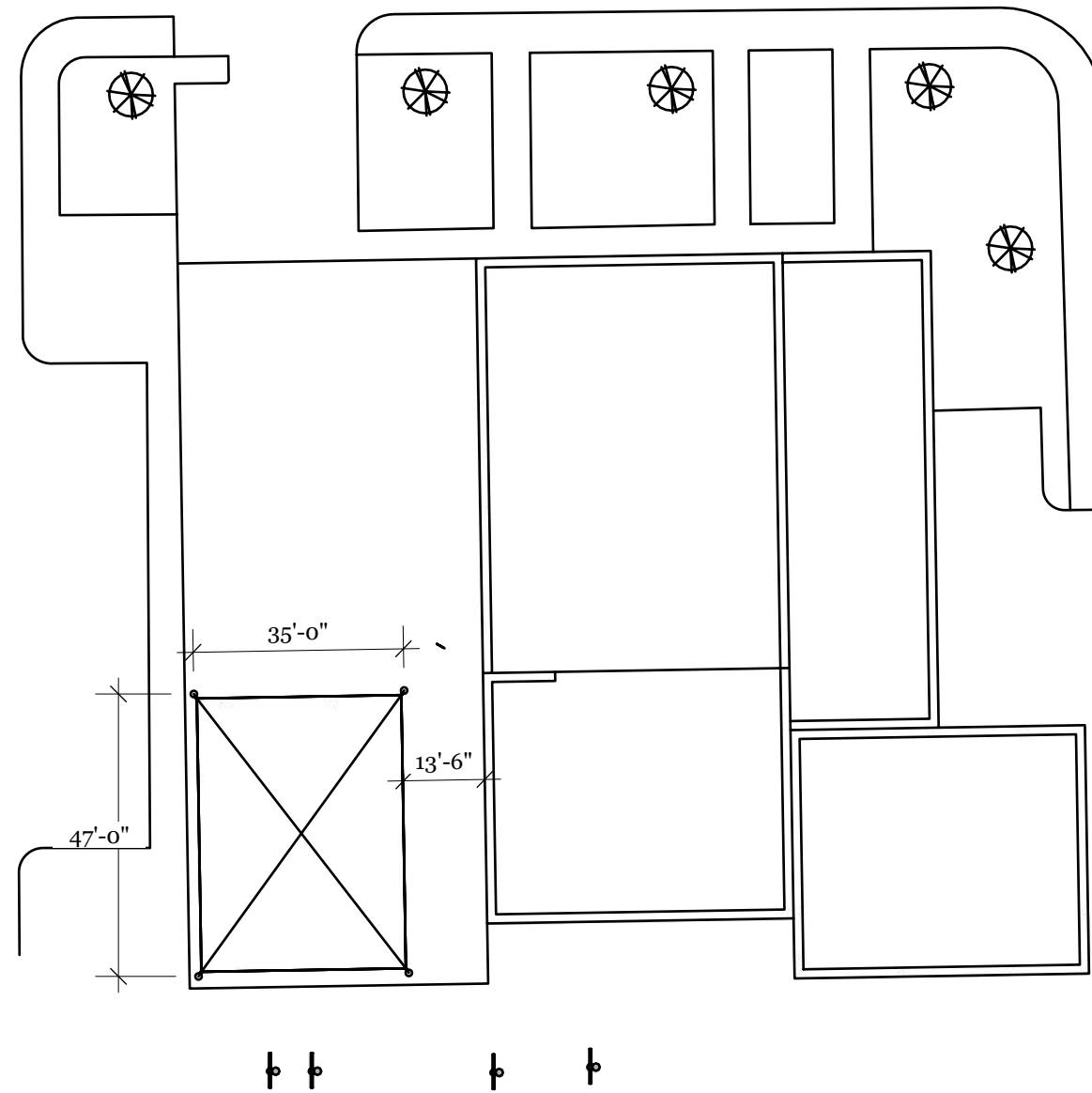
ISOMETRIC

**Containment Systems**

SMU Engineering - Drone Enclosure

REVISIONS

	MM/DD/YY		REMARKS	
1	3/18/26	tp	DD Drawing	Est No. 26508
2	4/2/26	tp	Reduce Size	
3	4/10/26	tp	Move Enclosure Away from Building	
4	4/24/26	tp	For Approval	Job No. 26508-09
5				



SITE PLAN

**Containment Systems**

SMU Engineering - Drone Enclosure

REVISIONS

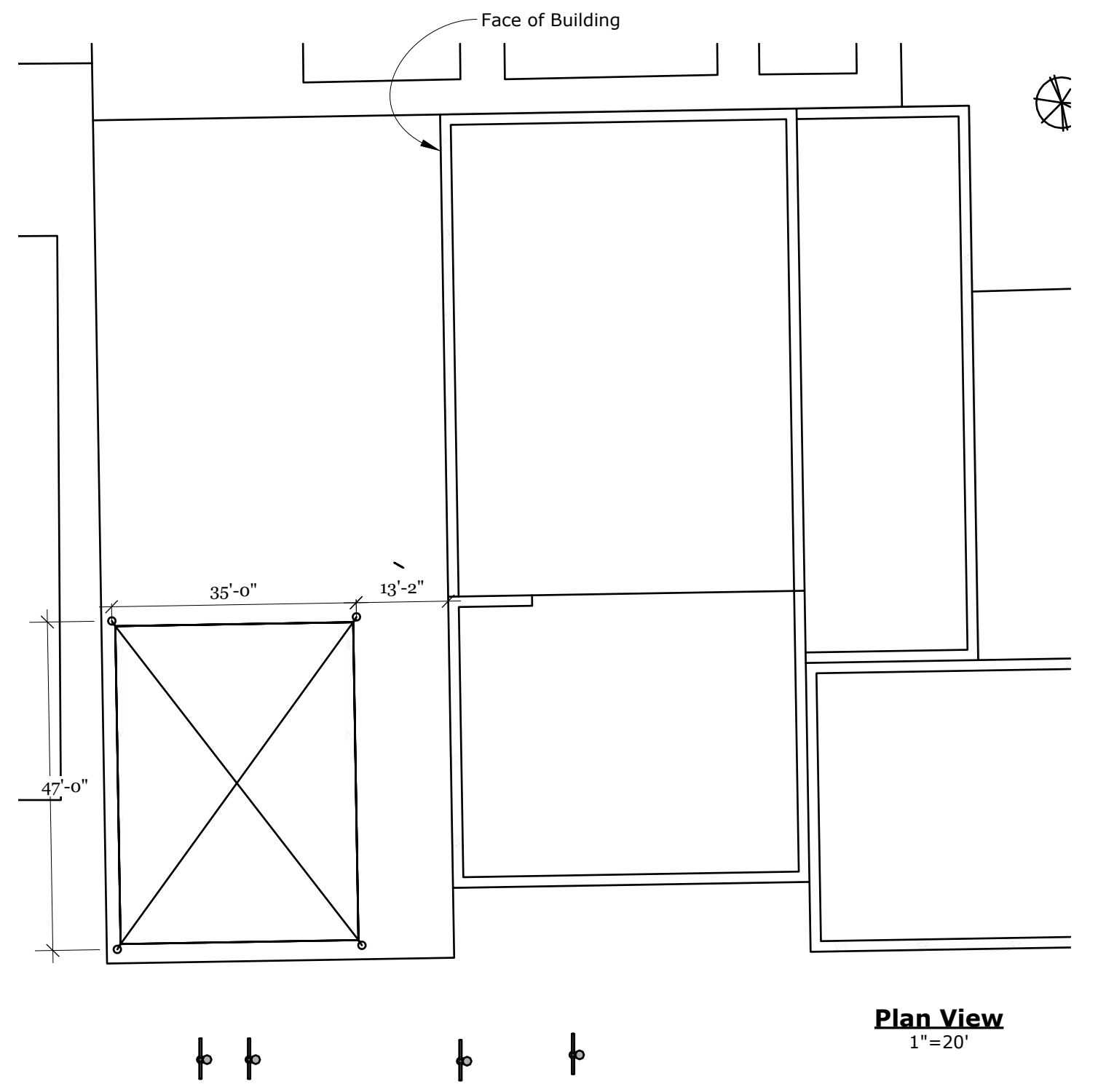
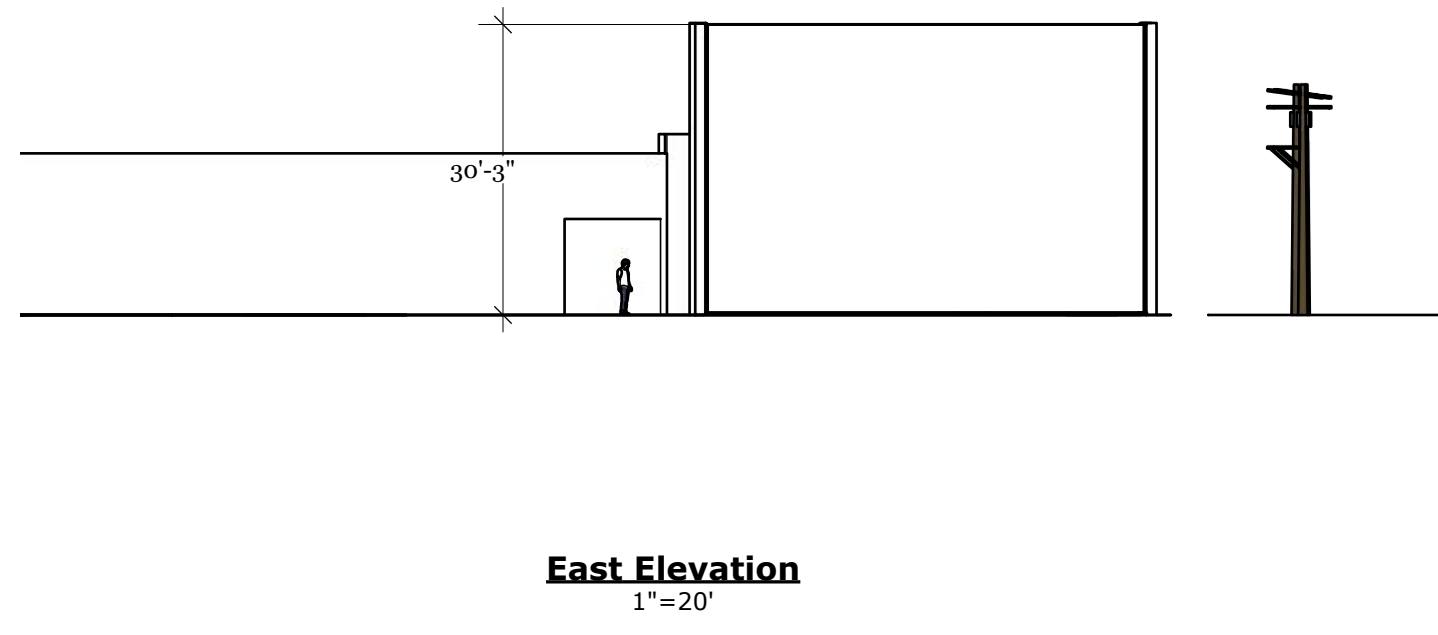
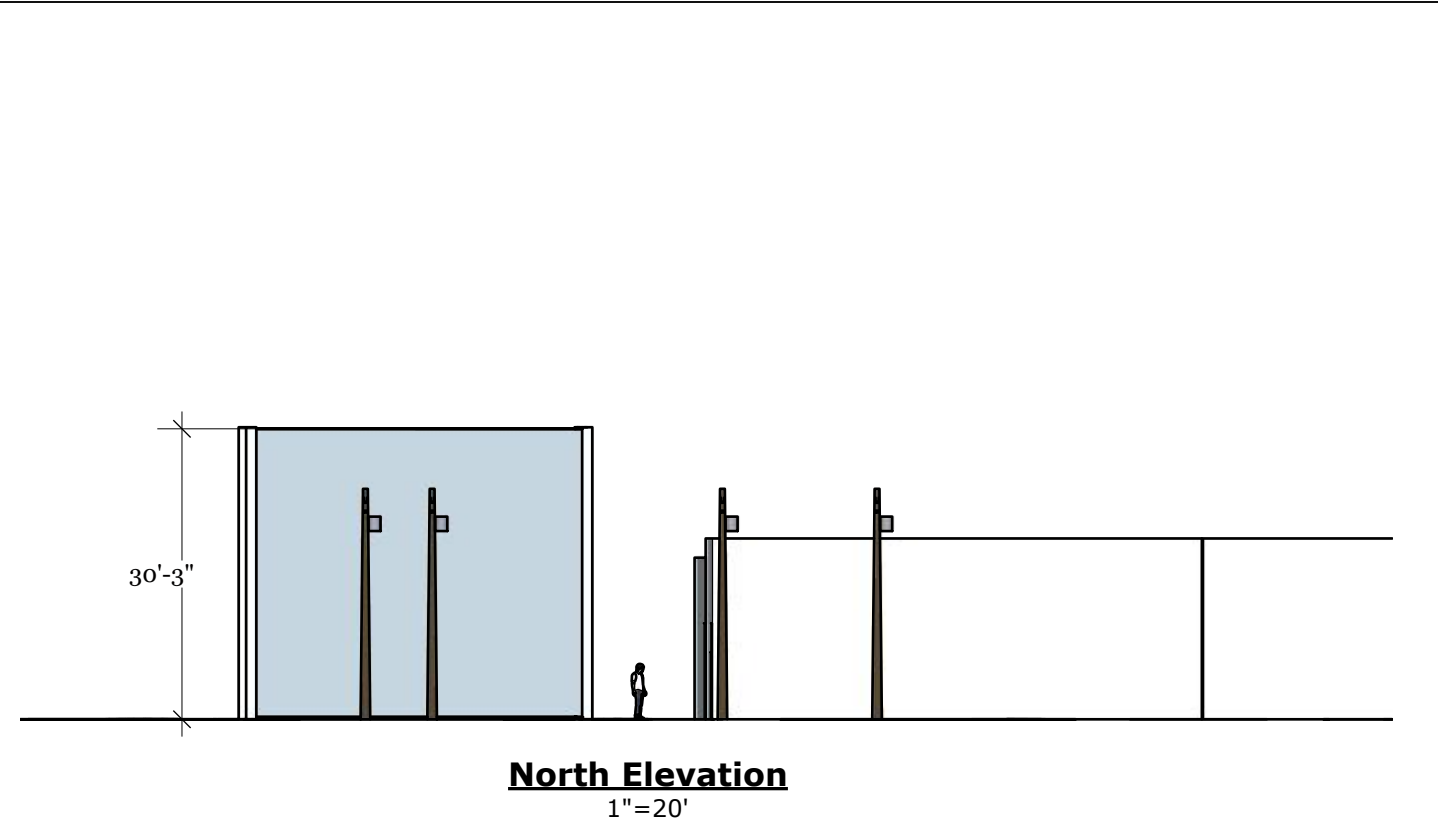
MM/DD/YY	REMARKS
3/18/26	DD Drawing
4/2/26	Reduce Size
4/10/26	Move Enclosure Away from Building
4/24/26	For Approval

Est No. 26508

Job No. 26508-09

3

N



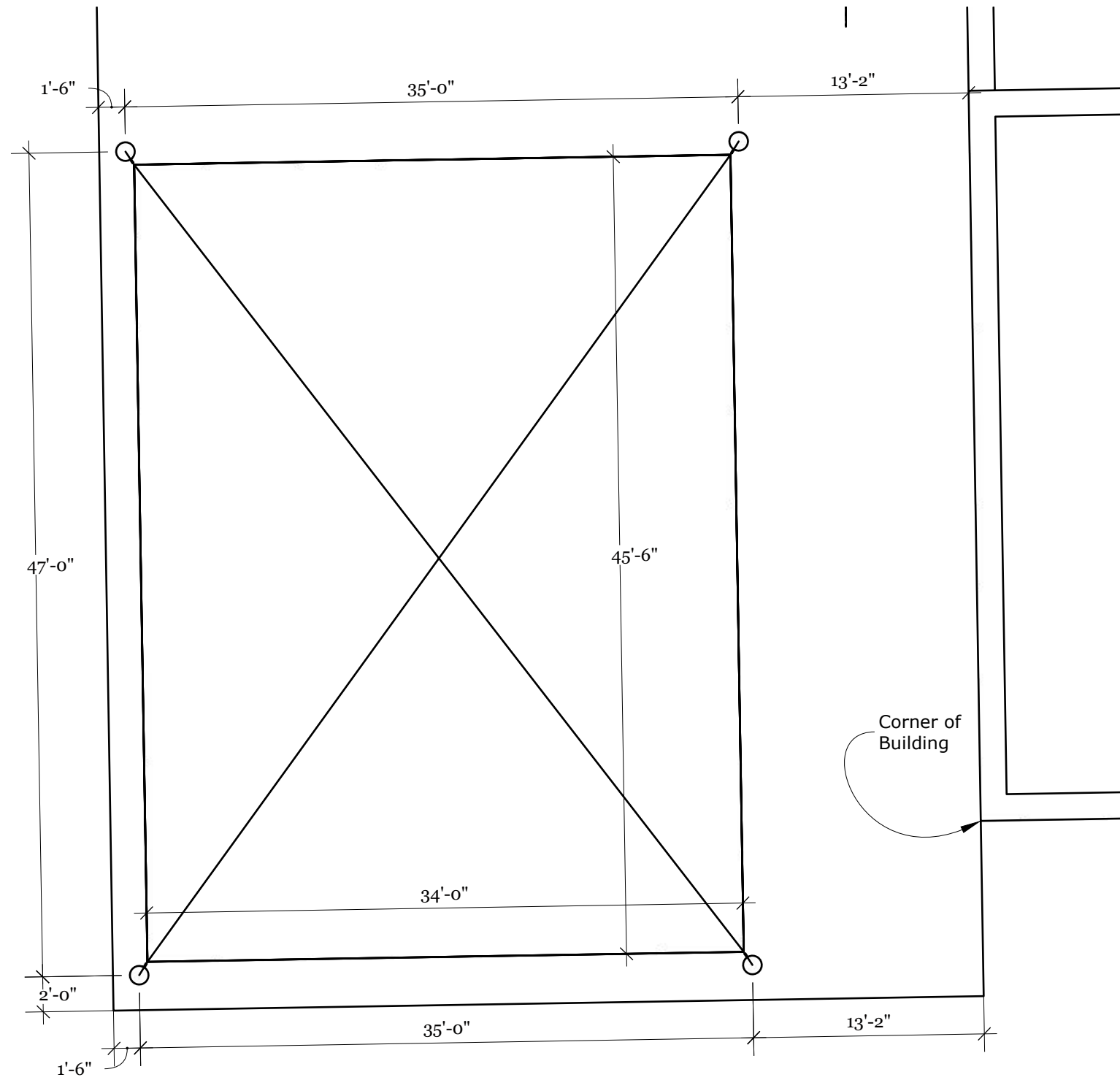
PLAN & ELEVATION

**Containment Systems**

SMU Engineering - Drone Enclosure

REVISIONS			
MM/DD/YY		REMARKS	
1	3/18/26	tp DD Drawing	Est No. 26508
2	4/2/26	tp Reduce Size	
3	4/10/26	tp Move Enclosure Away from Building	
4	4/24/26	tp For Approval	Job No. 26508-09
5			

4  
N



**Plan View**  
1/8" = 1'-0"

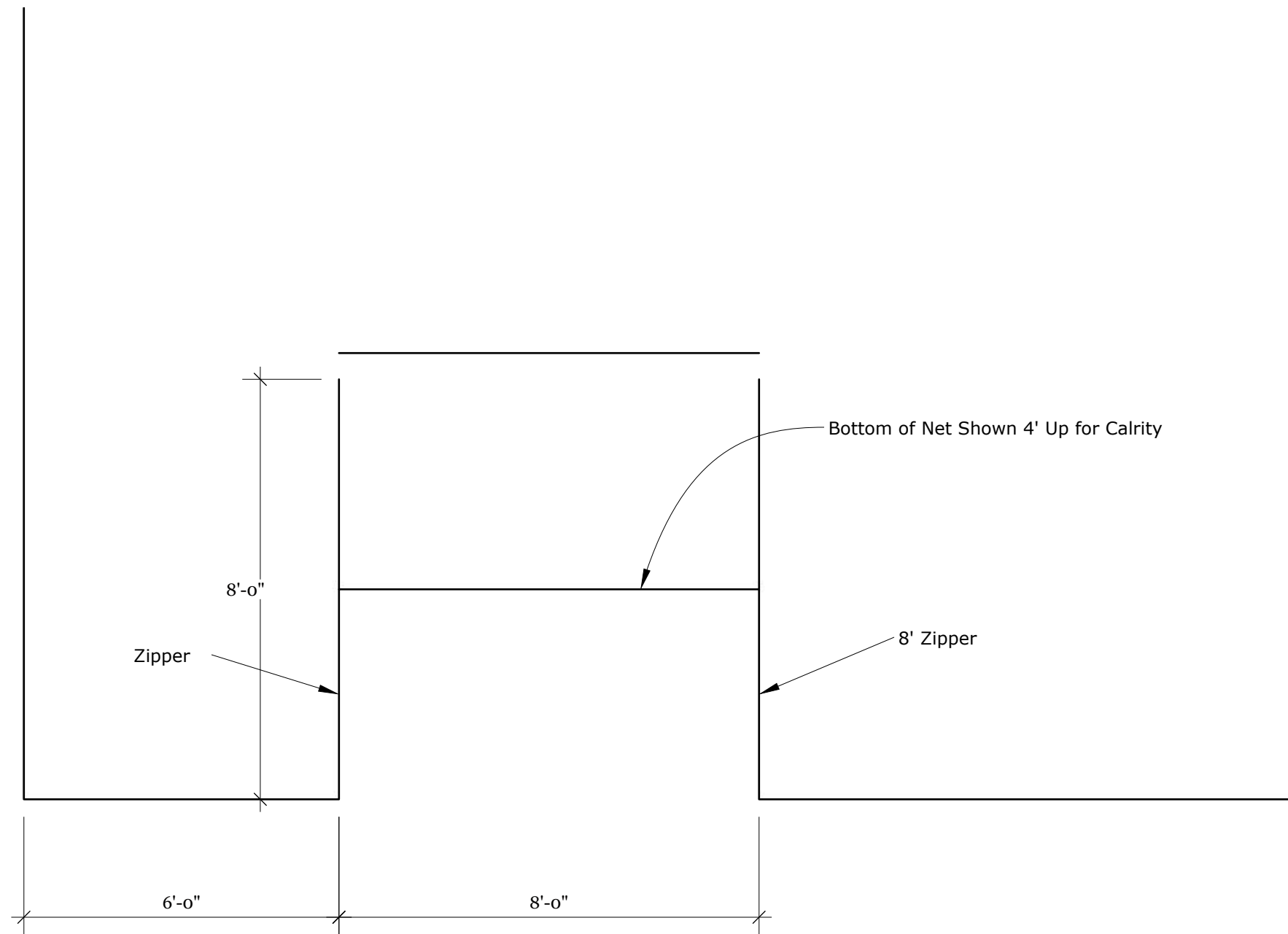
POLE LAYOUT

**Containment Systems**

SMU Engineering - Drone Enclosure

REVISIONS			
MM/DD/YY		REMARKS	
1	3/18/26	tp DD Drawing	Est No. 26508
2	4/2/26	tp Reduce Size	
3	4/10/26	tp Move Enclosure Away from Building	
4	4/24/26	tp For Approval	Job No. 26508-09
5			

5  
N



**Scale**  
3/8" = 1'-0"

DOOR DETAIL

Containment Systems

SMU Engineering - Drone Enclosure

REVISIONS

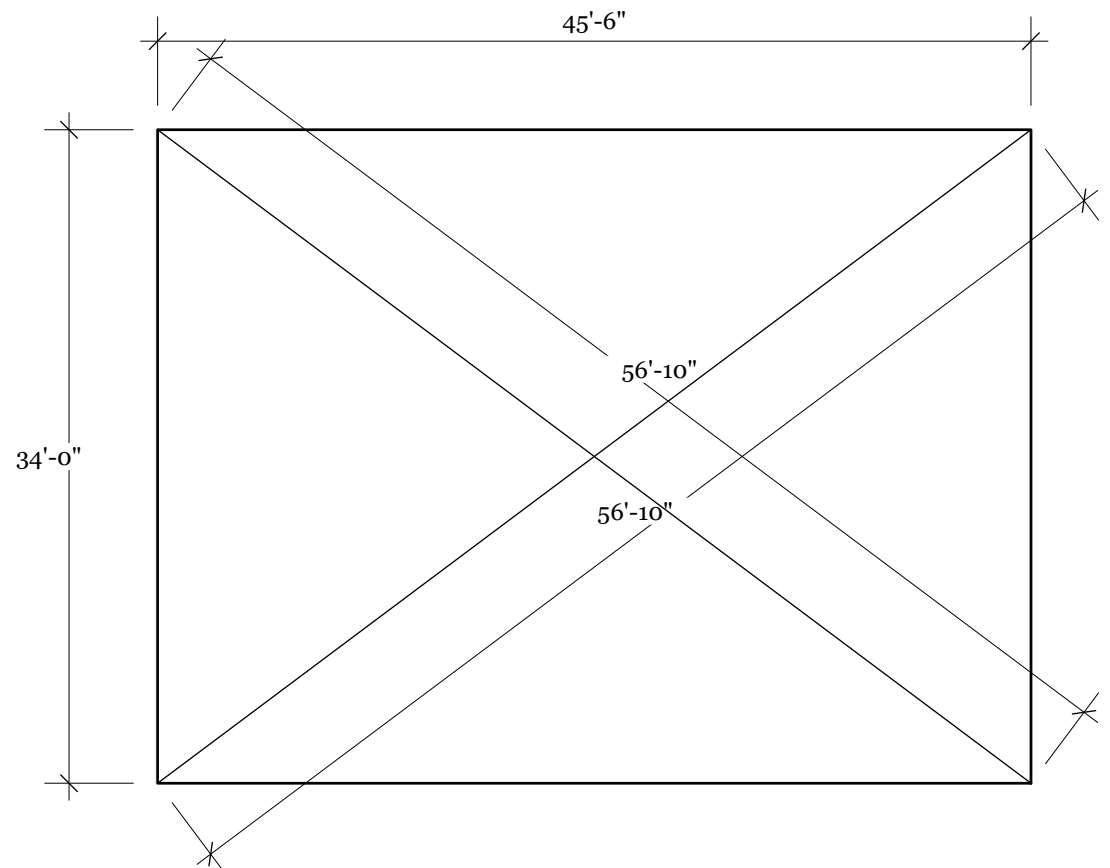
	MM/DD/YY		REMARKS
1	3/18/26	tp	DD Drawing Est No. 26508
2	4/2/26	tp	Reduce Size
3	4/10/26	tp	Move Enclosure Away from Building
4	4/24/26	tp	For Approval Job No. 26508-09
5			

6

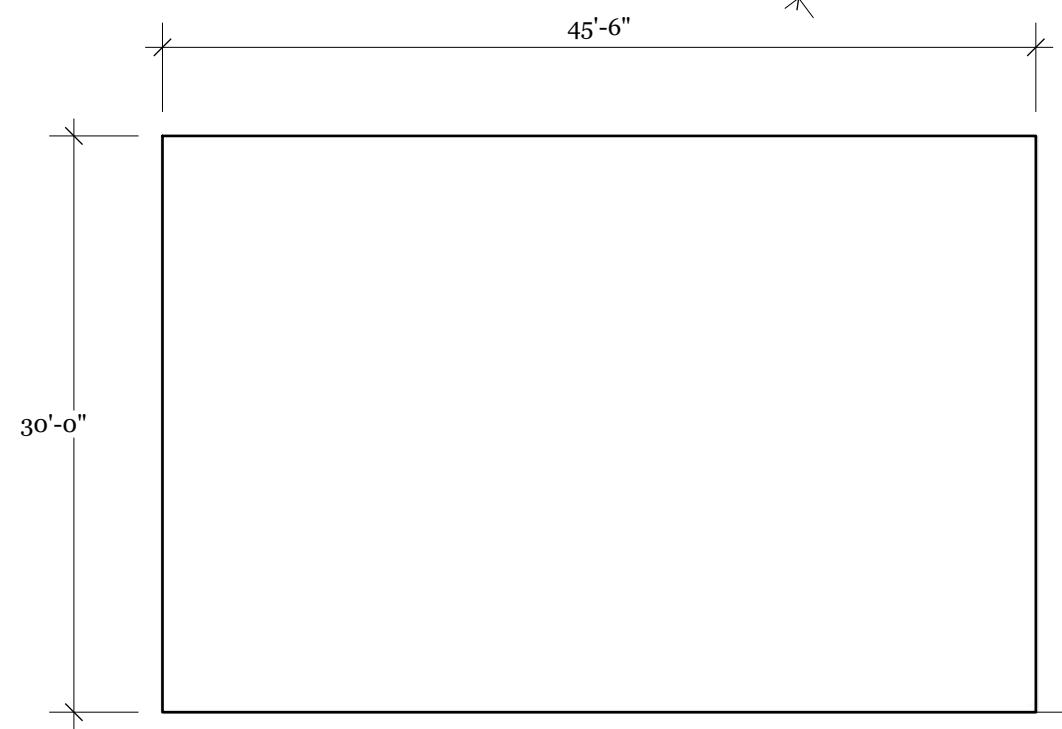
N

Netting Dimensions are Reduced  
2" to Allow for Clips at Cables

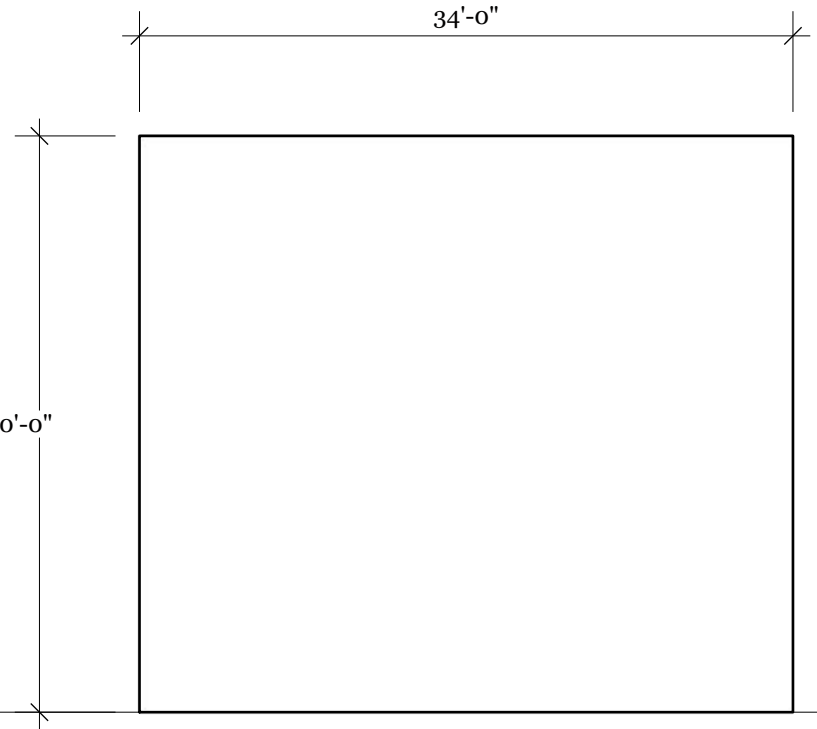
#18 Nylon  
Twisted Knotted  
2" Bar Measure  
Square Hung  
3/8" Sport Rope



**Top - 1 ea.**  
1/16"=1'-0"



**Long Side - 2 ea.**  
1/16"=1'-0"



**Short Side - 2 ea.**  
1/16"=1'-0"

NET FABRICATION

**Containment Systems**

SMU Engineering - Drone Enclosure

REVISIONS		
MM/DD/YY		REMARKS
1	3/18/26	tp DD Drawing Est No. 26508
2	4/2/26	tp Reduce Size
3	4/10/26	tp Move Enclosure Away from Building
4	4/24/26	tp For Approval Job No. 26508-09
5		



**GENERAL NOTES**

- STRUCTURAL DRAWINGS OR PARTS OF STRUCTURAL DRAWING MAY NOT BE USED WITHOUT PRIOR CONSENT
- CONSTRUCTION SHOWN IS STABLE AFTER THE STRUCTURE IS COMPLETE. THE CONTRACTOR IS RESPONSIBLE FOR TEMPORARY BRACING OF THE STRUCTURE DURING CONSTRUCTION.

**DESIGN LOADS**

- REFERENCE STANDARD FOR LOADING ASCE 7-22
  - BUILDING CLASSIFICATION

1) WIND LOAD BASED ON Af (sf/sf)	0.058
2) BASIC WIND SPEED PER ASCE 7-22	100 MPH
3) WIND EXPOSURE	B
4) WIND PRESSURE	16.32 - 13.39 PSF
WIND - NET	0.94 PSF
5) FORCE COEFFICIENT (Cf)	1.30
6) GUST FACTOR (G)	0.840
7) SNOW AND ICE LOAD FOR NETTING	
ICE DEAD LOAD - NET	11.41 PSF
WIND ICE LOAD - NET	2.03 PSF
SNOW LOAD - NET	9 PSF
8) RISK CATEGORY	I
9) IMPORTANCE FACTOR	1.0

**FOUNDATIONS**

- DIRECT EMBED POLES AS SHOWN.
- FOUNDATION DESIGN BASED ON ASSUMED SOIL CONDITIONS.

**CONCRETE**

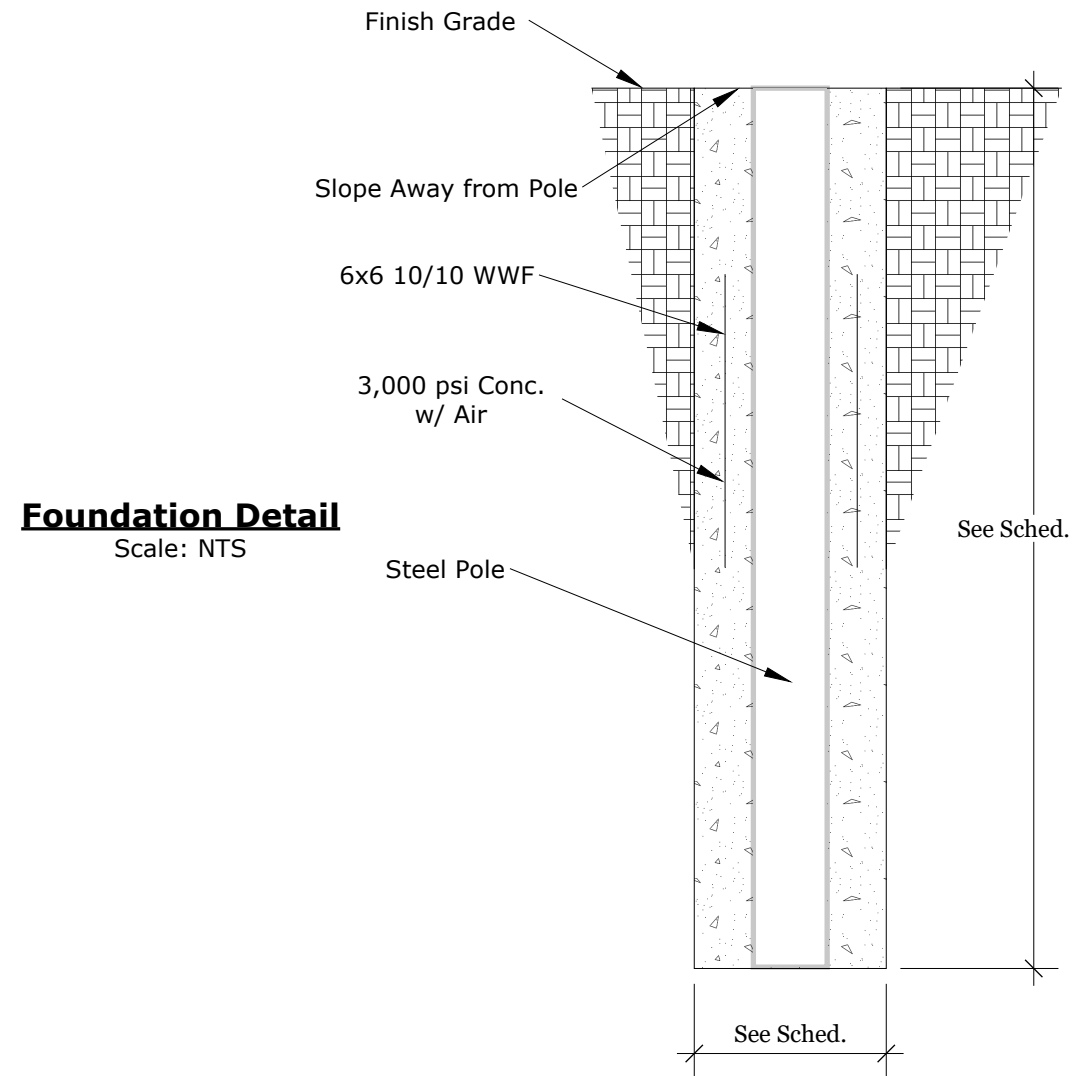
- ALL CONCRETE WORK IS TO BE IN ACCORDANCE WITH THE BUILDING CODE REQUIREMENTS FOR REINFORCED CONCRETE (ACI 318-14)
- CONCRETE PROPERTIES
  - MIN. DESIGN STRENGTH SHALL BE 3,000 PSI
  - CONCRETE MIXES MAY USE UP TO 15% FLY ASH BY WEIGHT

**STRUCTURAL STEEL**

- STEEL DESIGN PER AISC LRFD14. POLE DEFLECTION AND CABLE TENSION DESIGN CRITERIA ARE L/100 AND UP TO A 2% SAG RESPECTIVELY
- ALL FABRICATION AND ERECTION OF STRUCTURAL STEEL SHALL BE IN ACCORDANCE WITH ALL CURRENT AND APPROPRIATE EDITIONS OF THE AISC
- ALL STRUCTURAL PIPE SECTIONS SHALL HAVE A MINIMUM YIELD OF 50,000 PSI
- ALL SUPPORT CABLES SHALL BE 5/16" EHS GALVANIZED 7X1 STEEL STRAND WITH MINIMUM 11,200 LB BREAKING STRENGTH.

Foundation Schedule										
ID	Count	Pole Size	Footings		Collar			CY		
			Dia (in.)	Embedment (ft)	Yes	L	W	D	Hole	Total
A	4	12.75	24	7.58	Yes	2.00	2.00	1.00	0.78	3.12
Total	4									3.12

**Foundation Schedule**



NOTES

Containment Systems

SMU Engineering - Drone Enclosure

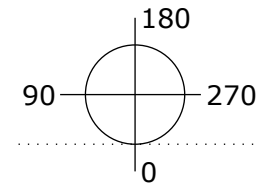
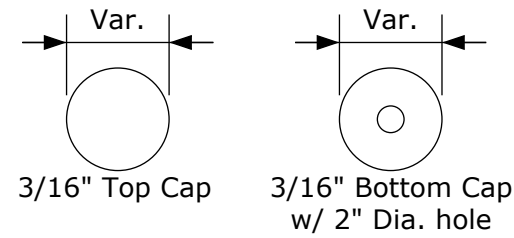
REVISIONS

MM/DD/YY	REMARKS
3/18/26	DD Drawing
4/2/26	Reduce Size
4/10/26	Move Enclosure Away from Building
4/24/26	For Approval

∞

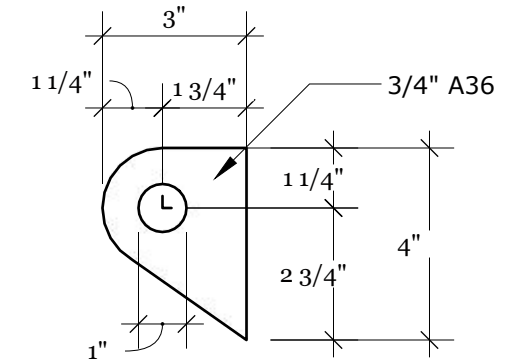
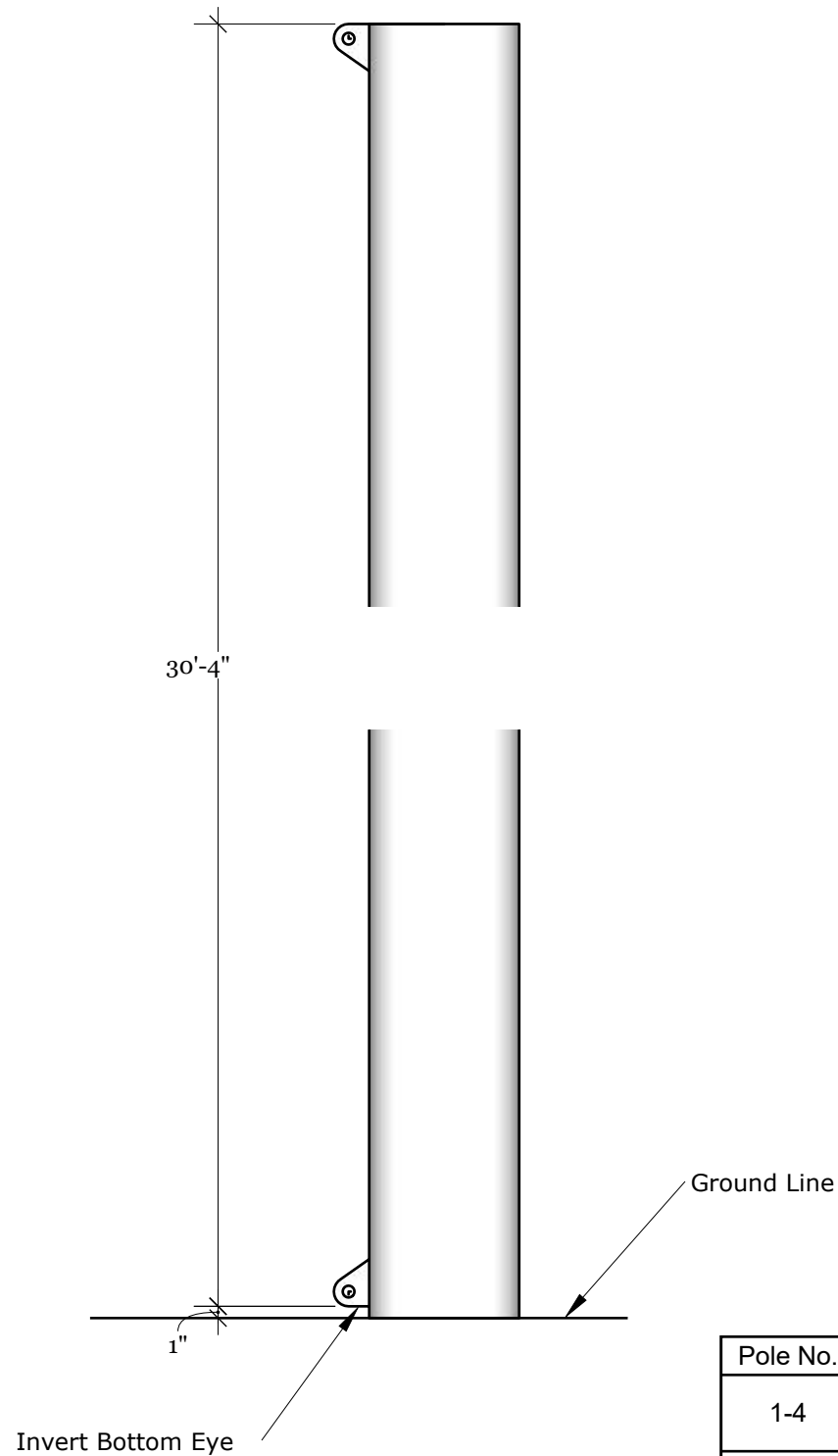
Z

Wheelabrate & Prime with CZ 859  
Primer  
& One Coat 8845 Black



Drill 3/4" Holes  
on Both Sides  
on Plane(s)/Location(s) shown

Weld Top and Bottom  
Caps to Pole as Shown



**Weld Eye - 8 ea.**  
3"=1'-0"

Pole No.	Type	Section	Height	Embed	Length	Number	Axis	Holes
1-4	Corner	12.75x.25	30.42	7.58	38.0	4	0-180	2 Weld Eyes
							90-270	
						Total	4	

POLE FABRICATION

Containment Systems

SMU Engineering - Drone Enclosure

REVISIONS

MM/DD/YY	REMARKS
3/18/26	tp DD Drawing Est No. 26508
4/2/26	tp Reduce Size
4/10/26	tp Move Enclosure Away from Building
4/24/26	tp For Approval Job No. 26508-09
5	

9  
Z